

Section II.

TM 9-2815-210-34P

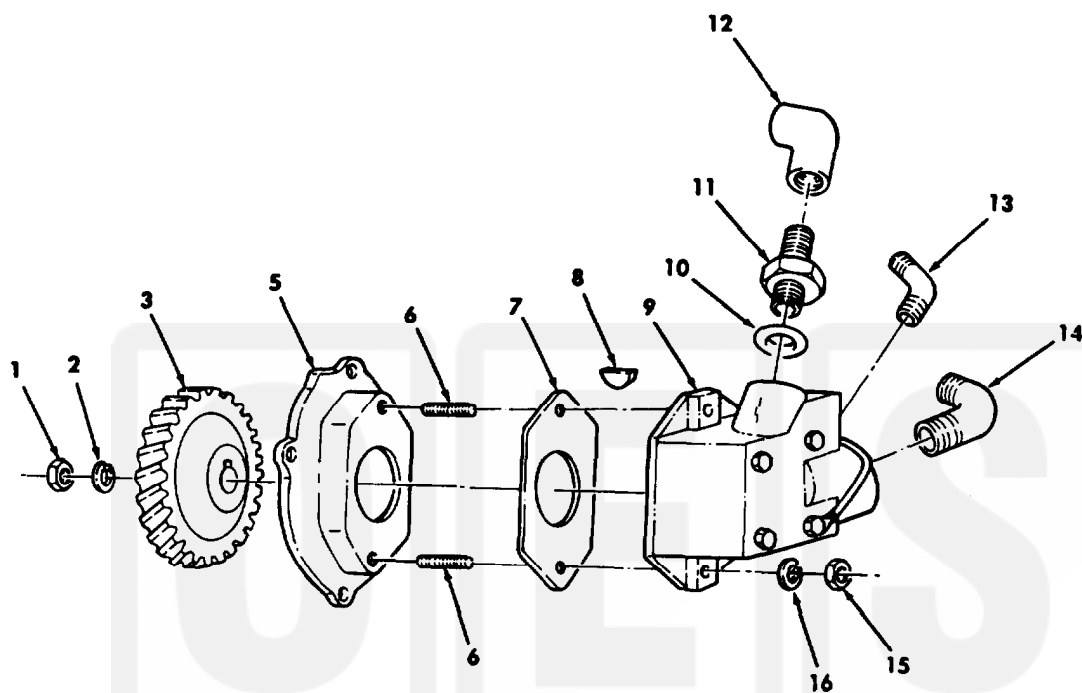
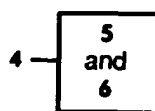


Figure 35. Hydraulic Pump and Related Parts (LDS465-1A).

SECTION II		TM 9-2815-210-34P					(6)	(7)
(1)	(2)	(3)	(4)	(5)				
ITEM NO	SMR CODE	NSN	CAGEC	PART NUMBER	DESCRIPTION AND USABLE ON	CODES(UOC)	QTY	
					GROUP 14 STEERING 1410 HYDRAULIC PUMP OR FLUID MOTOR ASSEMBLY			
					FIG. 35 HYDRAULIC PUMP AND RELATED PARTS (LDS465-1A)			
1	PAFZZ	5310009300577	19207	10951373	NUT, SELF-LOCKING	UOC: 251, 268, 269, 270, 271, 273, 274, 275, 276, 277, 278, 279, 281, 287, 587	1	
2	XDFZZ		19207	10951374	WASHER FLAT	UOC: 251, 268, 269, 270, 271, 273, 274, 275, 276, 277, 278, 279, 281, 287, 587	1	
3	PAFZZ	3020000753331	19207	10935243	GEAR, HELICAL	UOC: 251, 268, 269, 270, 271, 273, 274, 275, 276, 277, 278, 279, 281, 287, 587	1	
4	AFFZZ	2815002546311	19207	10935246	ADAPTER ASSEMBLY, FU	UOC: 251, 268, 269, 270, 271, 273, 274, 275, 276, 277, 278, 279, 281, 287, 587	1	
5	PAFZZ	2530004859554	19207	10935246-1	.ADAPTER HYDRAULIC	UOC: 251, 268, 269, 270, 271, 273, 274, 275, 276, 277, 278, 279, 281, 287, 587	1	
6	PAFZZ	5307009353695	19207	7376342	.STUD PLAIN	UOC: 251, 268, 269, 270, 271, 273, 274, 275, 276, 277, 278, 279, 281, 287, 587	2	
7	PAFZZ	5330000753330	19207	10935194	GASKET PART OF KIT P/N 57K1319	UOC: 251, 268, 269, 270, 271, 273, 274, 275, 276, 277, 278, 279, 281, 287, 587	1	
8	PAFZZ	5315000431787	96906	MS35756-34	KEY, WOODRUFF	UOC: 251, 268, 269, 270, 271, 273, 274, 275, 276, 277, 278, 279, 281, 287, 587	1	
9	PAFZZ	4320002395663	19207	11640923	PUMP, HYDRAULIC, POWE	UOC: 251, 268, 269, 270, 271, 273, 274, 275, 276, 277, 278, 279, 281, 287, 587	1	
10	PAFZZ	5331008080794	96906	MS28778-8	O-RING PART OF KIT P/N 57K1319	UOC: 251, 268, 269, 270, 271, 273, 274, 275, 276, 277, 278, 279, 281, 287, 587	1	
11	PPFZZ	4730011528838	19207	8720306	ADAPTER, STRAIGHT, PI	UOC: 251, 268, 269, 270, 271, 273, 274, 275, 276, 277, 278, 279, 281, 287, 587	1	
12	PAFZZ	4730009998582	19207	8137773	ELBOW PIPE	UOC: 251, 268, 269, 270, 271, 273, 274, 275, 276, 277, 278, 279, 281, 287, 587	1	
13	PAFZZ	4730009300982	96906	MS20823-6B	ELBOW PIPE TO TUBE	UOC: 251, 268, 269, 270, 271, 273, 274, 275, 276, 277, 278, 279, 281, 287, 587	1	
14	PAFZZ	4730002030030	81343	12-12 140239C	ELBOW, PIPE TO BOSS	UOC: 251, 268, 269, 270, 271, 273, 274, 275, 276, 277, 278, 279, 281, 287, 587	1	
15	PAFZZ	5310007320558	96906	MS51967-8	NUT, PLAIN, HEXAGON	UOC: 251, 268, 269, 270, 271, 273, 274, 275, 276, 277, 278, 279, 281, 287, 587	2	